

IMMEUBLE RESIDENTIEL

82 GRAND-RUE - MERTERT



6 UNITÉS

**2 APPARTEMENTS
1 CHAMBRE**

**2 APPARTEMENTS
2 CHAMBRES**

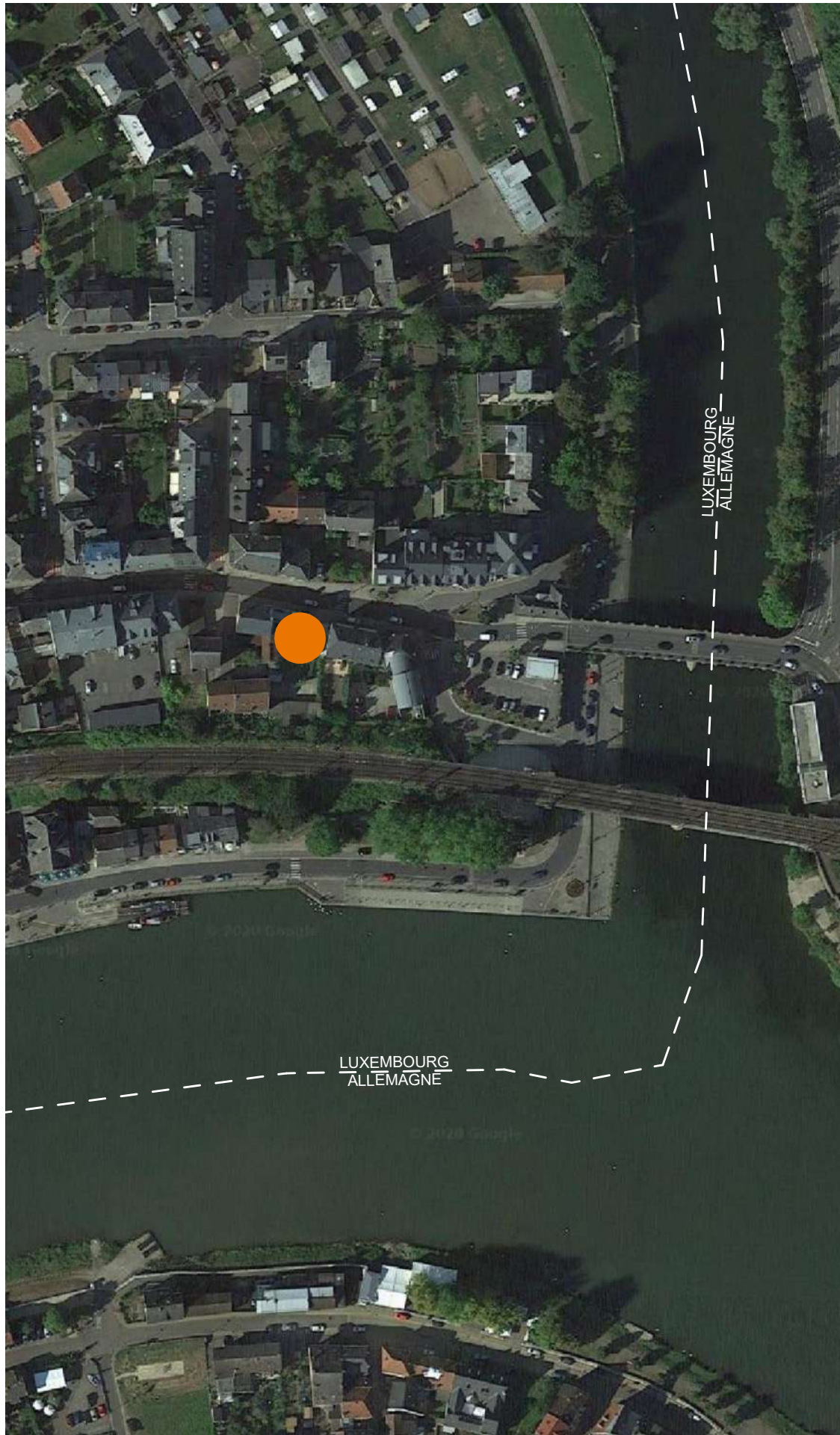
**2 APPARTEMENTS
3 CHAMBRES**

PROMOTEUR

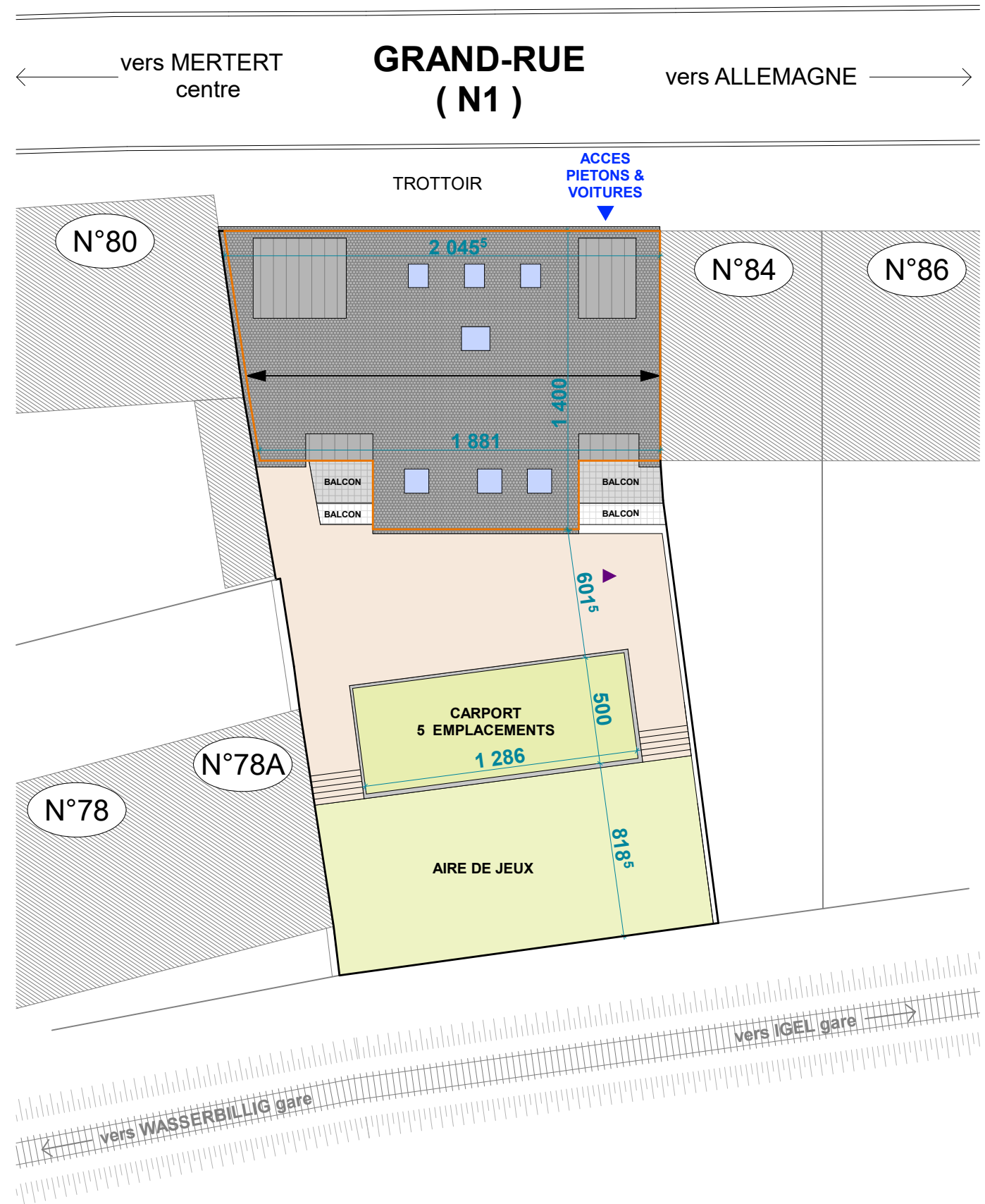
DELTACAP S.A.
41 rue du Kiem
L-8030 STRASSEN

ARCHITECTE

GROUPE L®
ARCHITECTURE, URBANISM AND MORE
304 A route de Thionville
L-5884 HOWALD



82 GRAND-RUE - MERTERT

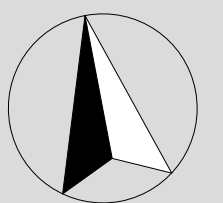


IMPLANTATION

A PROXIMITÉ

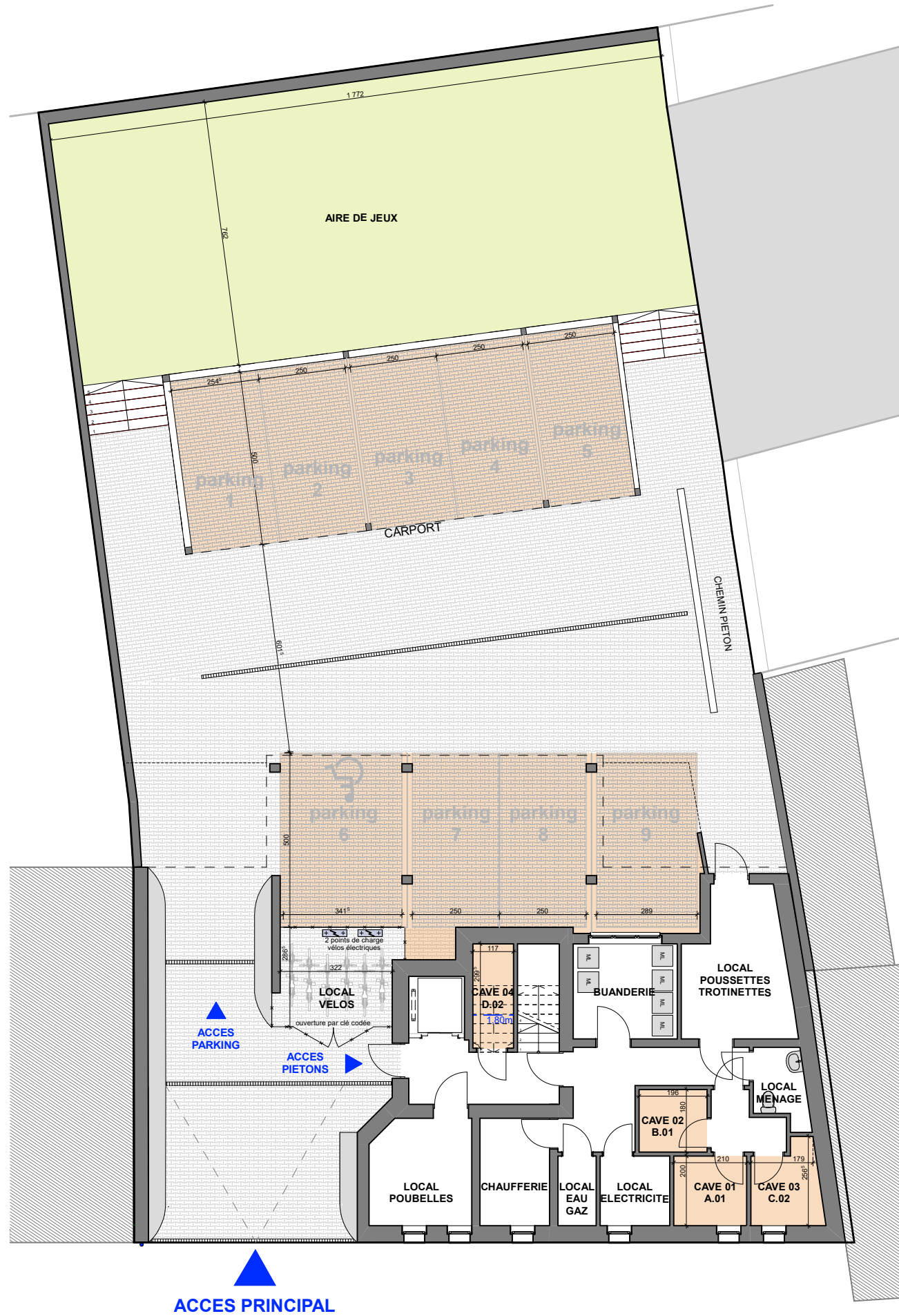
- RESTAURANTS ~ 50m
- PARC ~ 100m
- COMMERCES ~ 200m
- BANQUE ~ 260m
- PHARMACIE ~ 300m
- MEDECINS ~ 500m
- GARE ~ 500m
- ECOLES ~ 700m

N



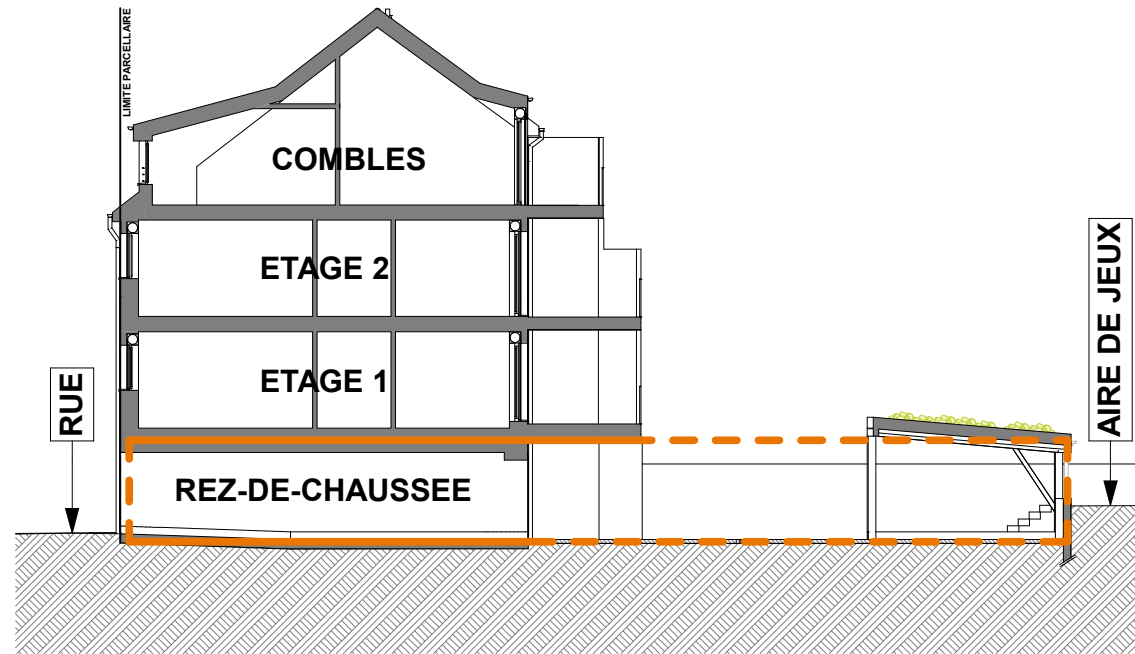
1:250*

**REZ-DE-CHAUSSEE
CAVES & PARKING**



REZ-DE-CHAUSSEE

1:150*



COUPE LONGITUDINALE

1:200*



FACADE PRINCIPALE

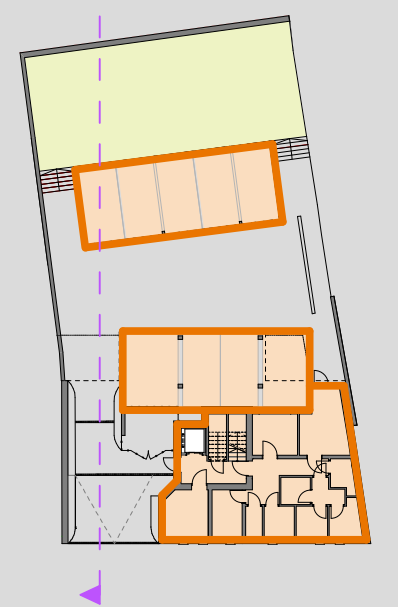
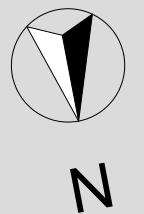
LOCAUX PRIVES

Cave 01	4,20 m ²
Cave 02	3,53 m ²
Cave 03	4,43 m ²
Cave 04	3,51 m ²

9 emplacements de parking

LOCAUX COMMUNS

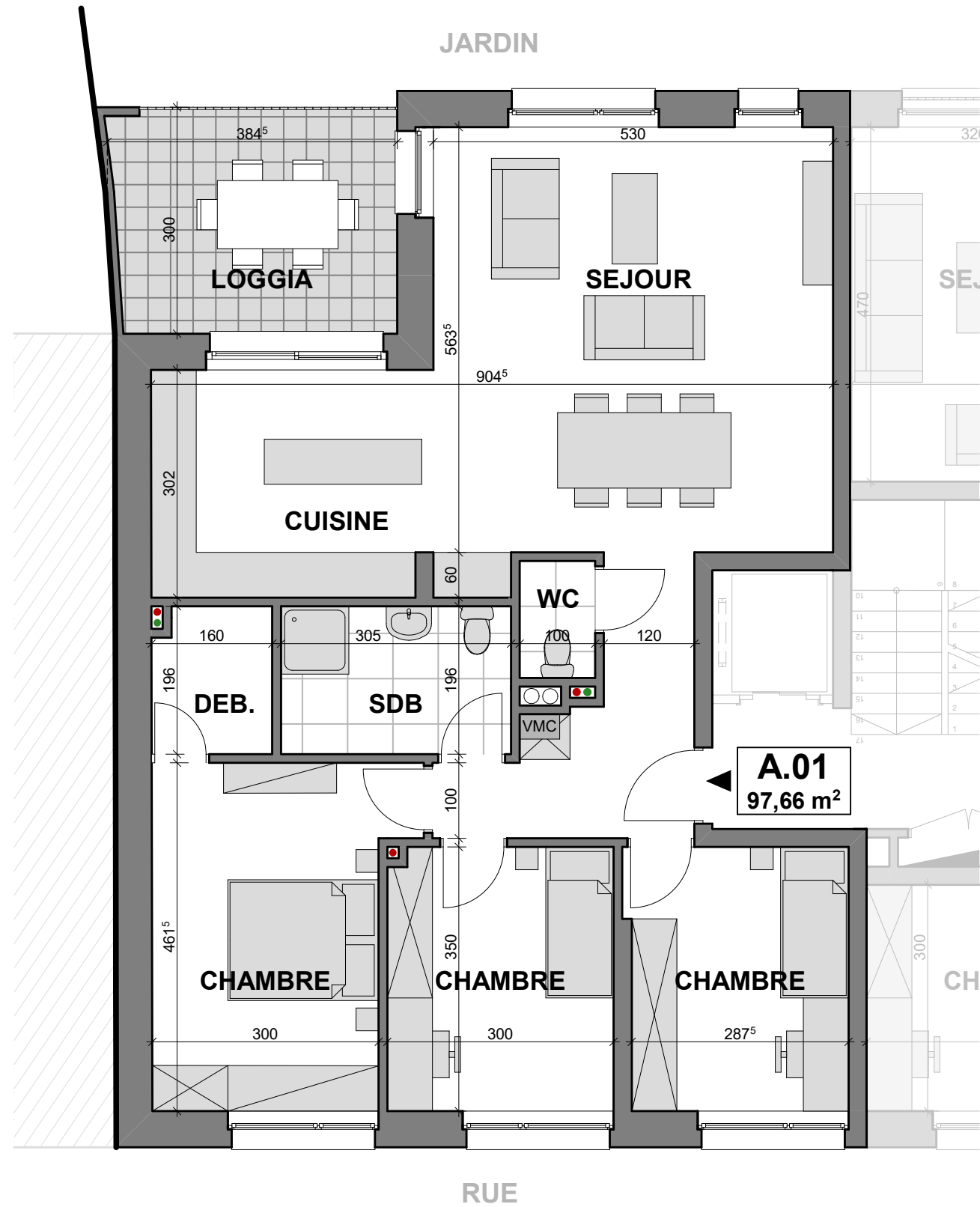
- Local vélos
- Buanderie
- Local poussettes
- Local poubelles
- Local ménage
- Locaux techniques
- Aire de jeux



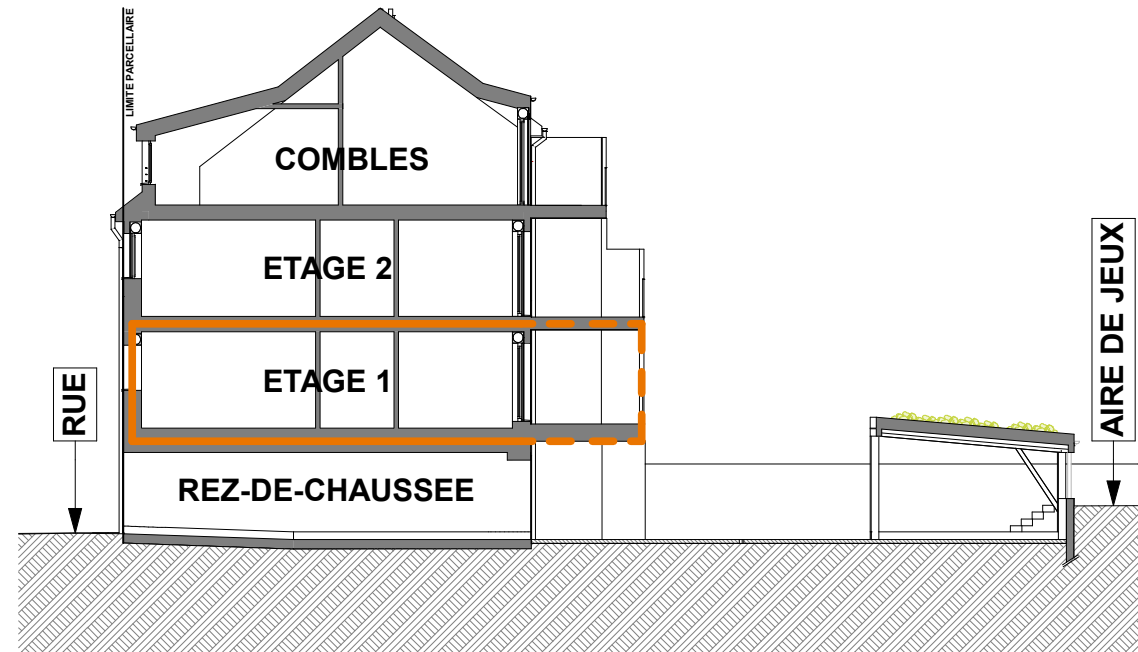
APPARTEMENT A.01

82 GRAND-RUE - MERTERT

ETAGE 1



ETAGE 1



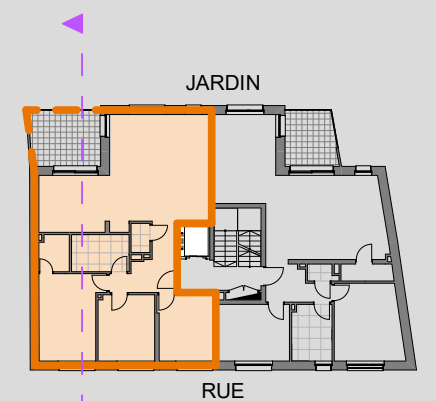
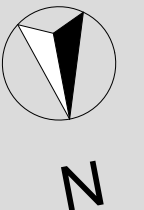
COUPE LONGITUDINALE

1:200*



FACADE SUD

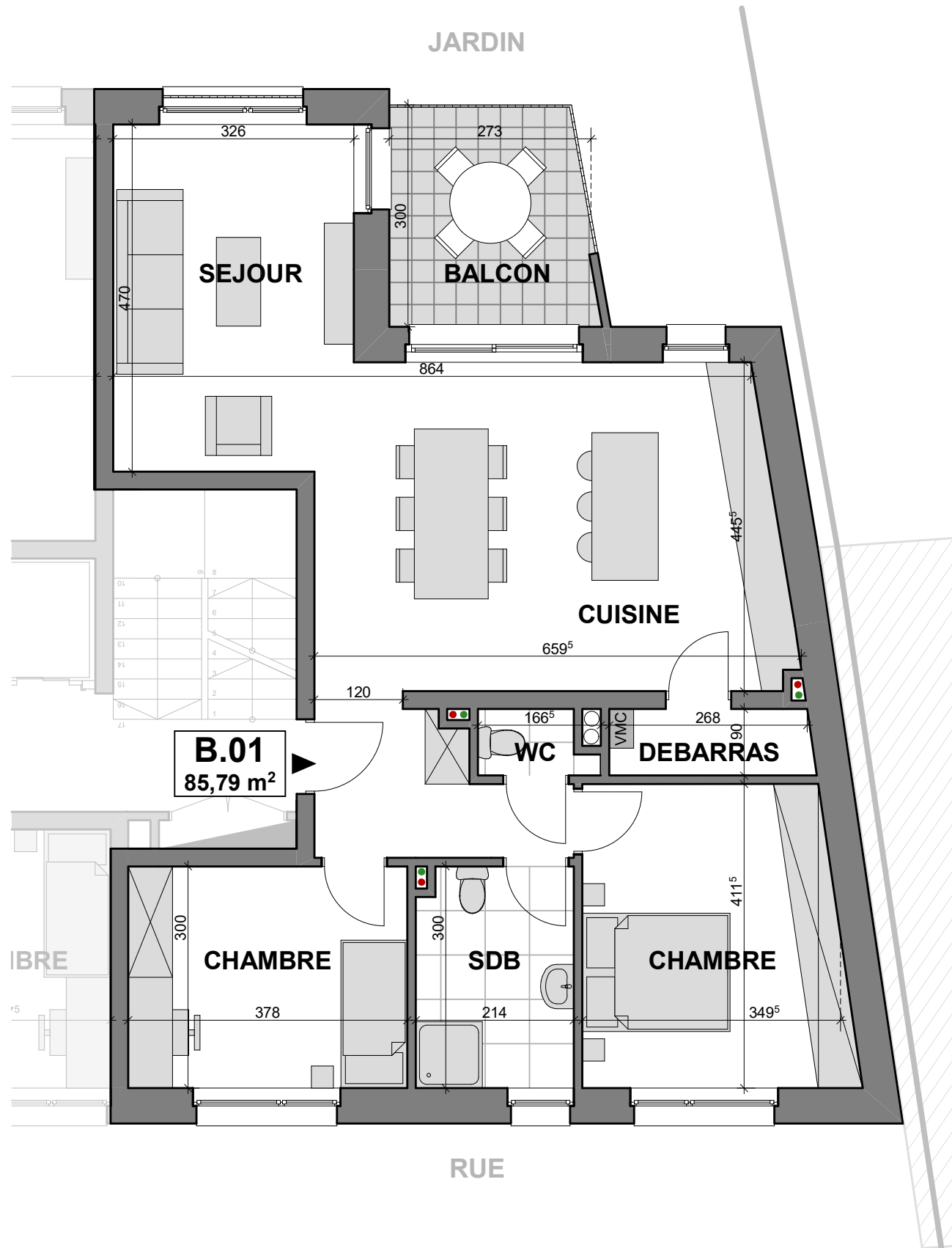
APP. A.01	± 97,70 m ²
Hall	7,58 m ²
Cuisine	11,15 m ²
Séjour	30,47 m ²
WC	1,55 m ²
Salle de bain	5,98 m ²
Débarras	3,02 m ²
Chambre 01	10,18 m ²
Chambre 02	10,43 m ²
Chambre 03	14,46 m ²
Loggia	11,16 m ²



APPARTEMENT B.01

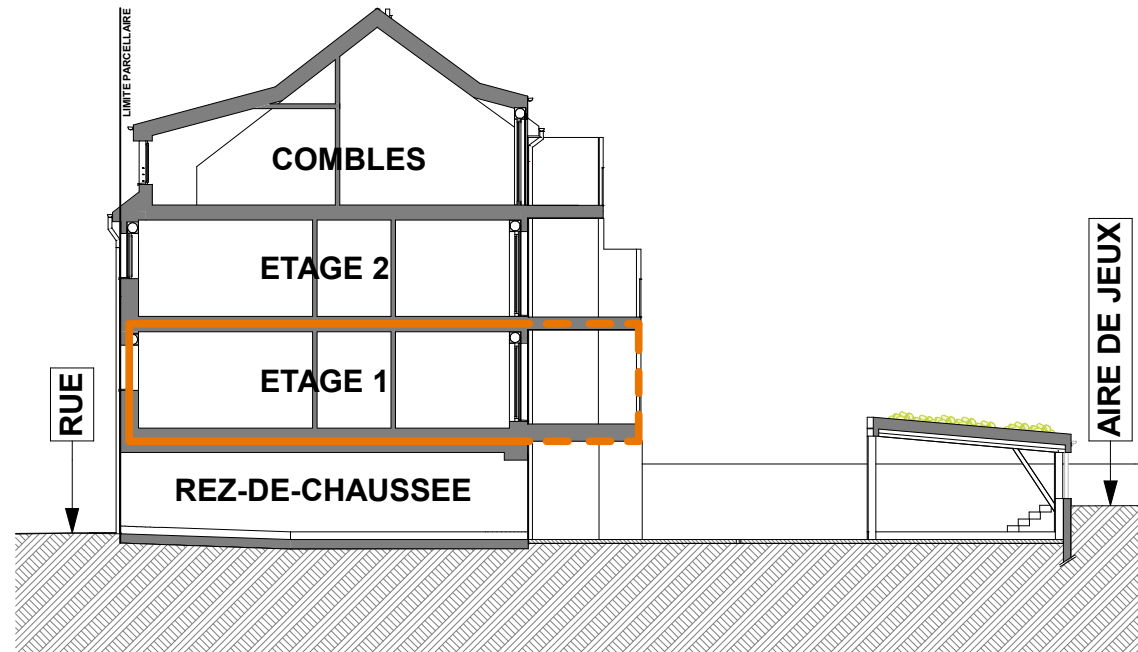
82 GRAND-RUE - MERTERT

ETAGE 1



ETAGE 1

1:75*



COUPE LONGITUDINALE

1:200*

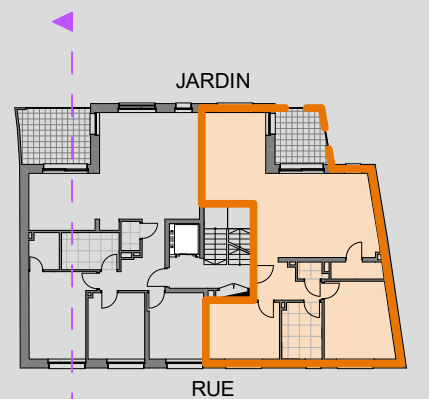


FACADE SUD

APP. B.01	± 85,79 m ²
Hall	5,82 m ²
Cuisine	27,09 m ²
Séjour	15,31 m ²
WC	1,50 m ²
Salle de bain	6,31 m ²
Débarras	2,47 m ²
Chambre 01	11,34 m ²
Chambre 02	14,39 m ²
Balcon	8,09 m ²



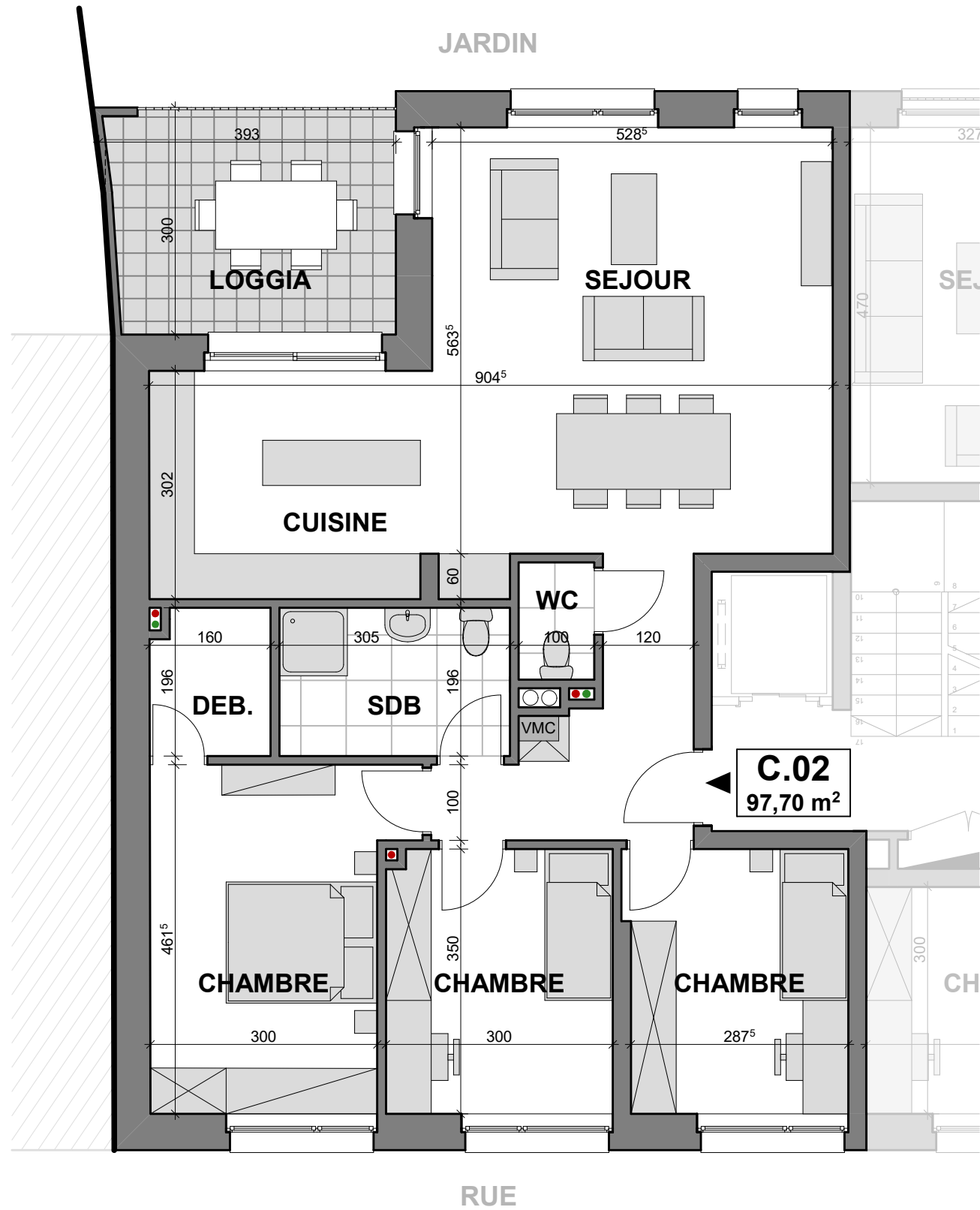
N



APPARTEMENT C.02

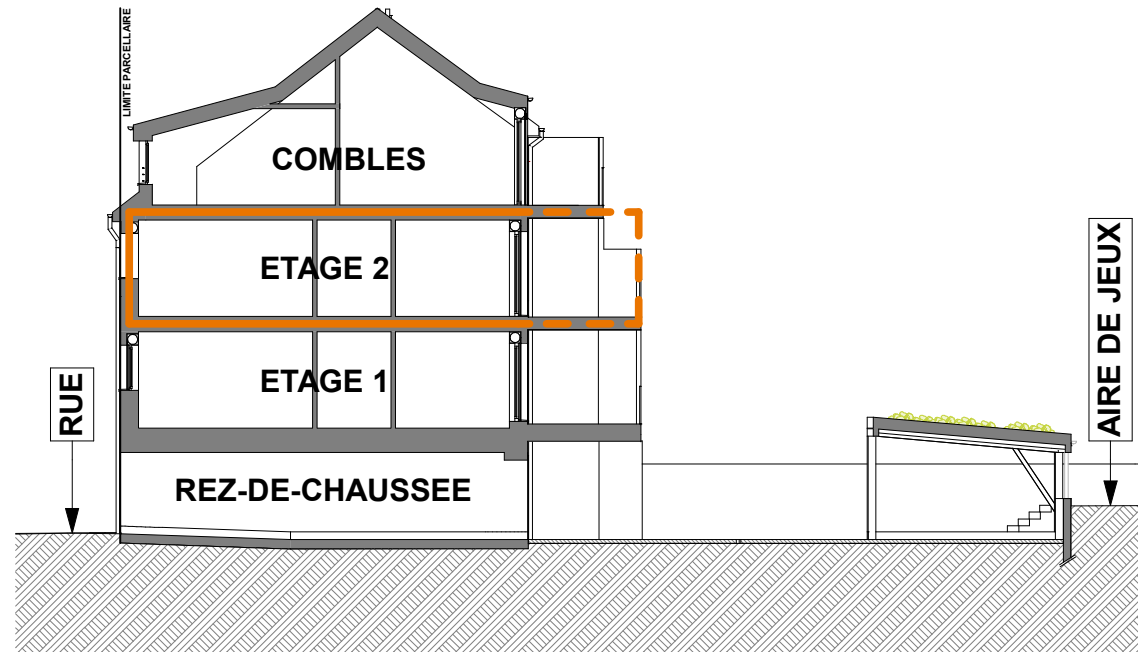
82 GRAND-RUE - MERTERT

ETAGE 2



ETAGE 2

1:75*



COUPE LONGITUDINALE

1:200*

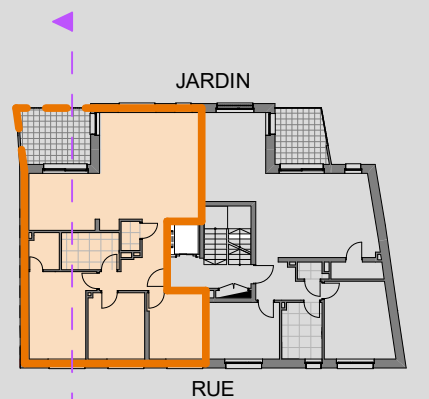


FACADE SUD

APP. A.01	± 97,70 m ²
Hall	7,58 m ²
Cuisine	11,15 m ²
Séjour	30,47 m ²
WC	1,55 m ²
Salle de bain	5,98 m ²
Débarras	3,02 m ²
Chambre 01	10,18 m ²
Chambre 02	10,43 m ²
Chambre 03	14,46 m ²
Loggia	11,17 m ²



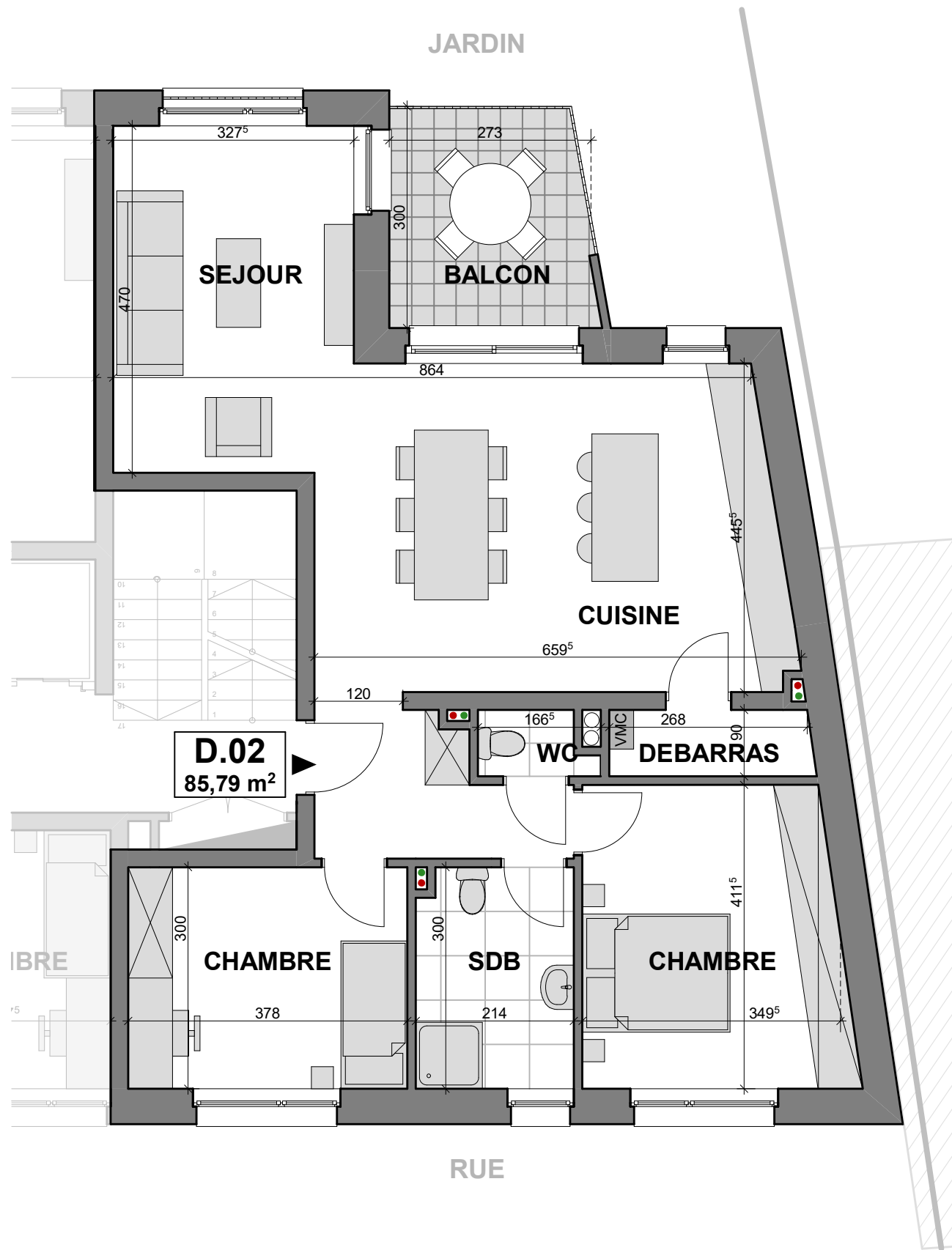
N



APPARTEMENT D.02

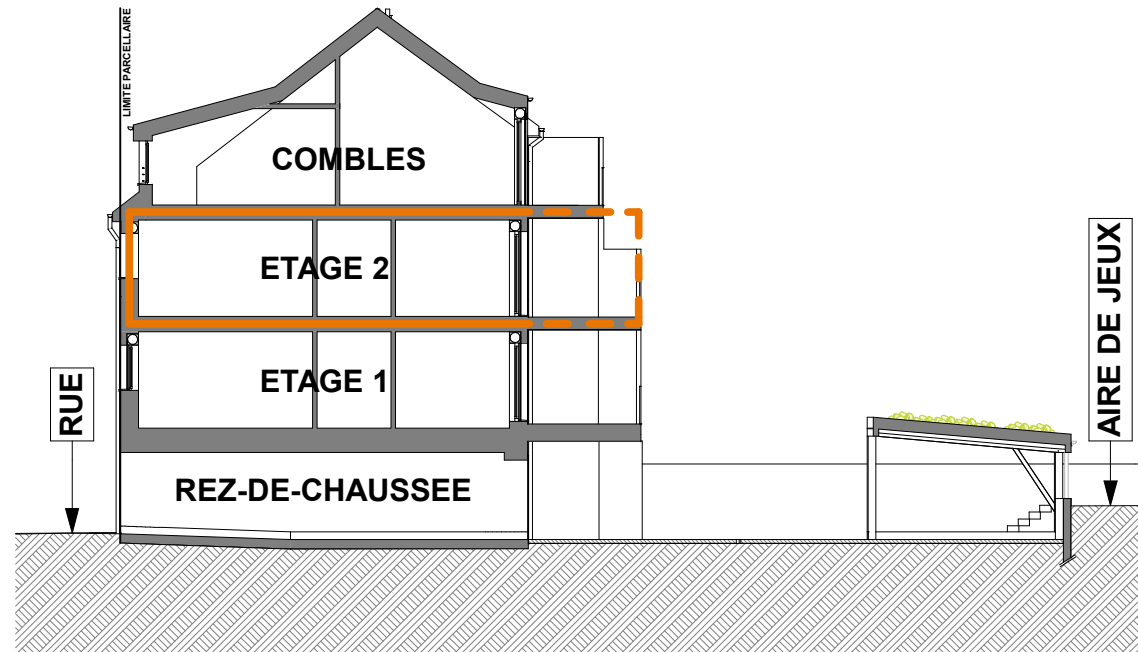
82 GRAND-RUE - MERTERT

ETAGE 2



ETAGE 2

1:75*



COUPE LONGITUDINALE

1:200*

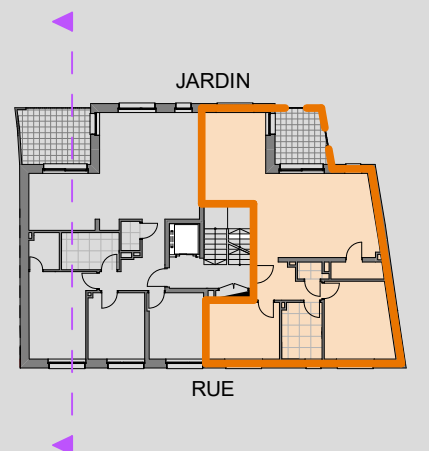


FACADE SUD

APP. D.02	± 85,79 m ²
Hall	5,82 m ²
Cuisine	27,09 m ²
Séjour	15,31 m ²
WC	1,50 m ²
Salle de bain	6,31 m ²
Débarras	2,47 m ²
Chambre 01	11,34 m ²
Chambre 02	14,39 m ²
Balcon	8,09 m ²



N

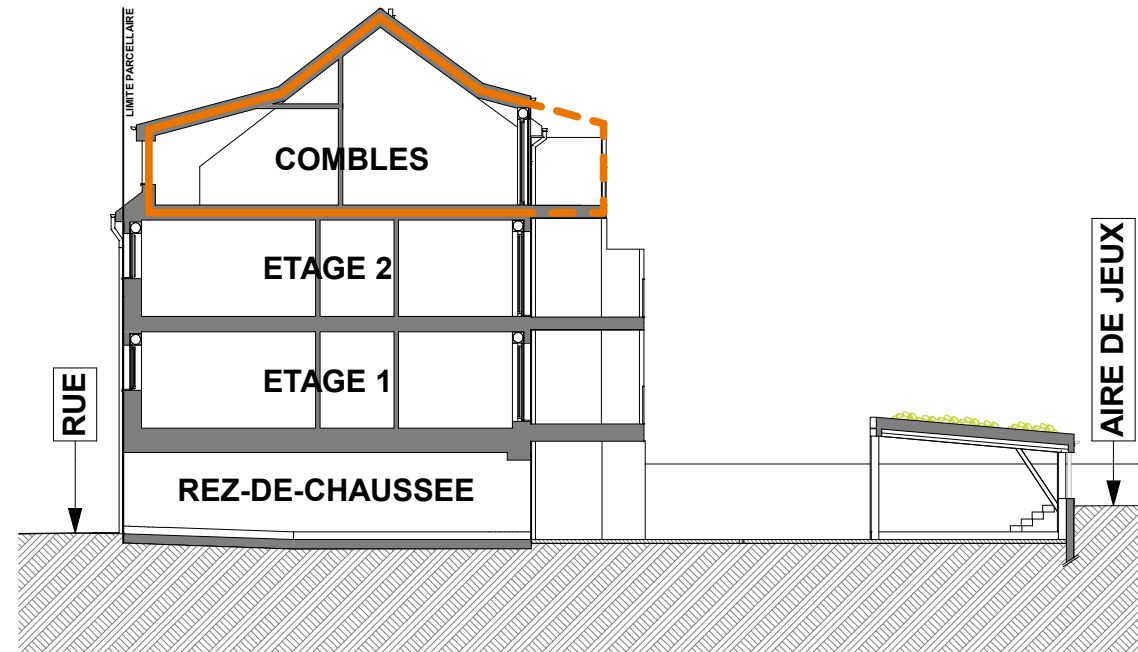
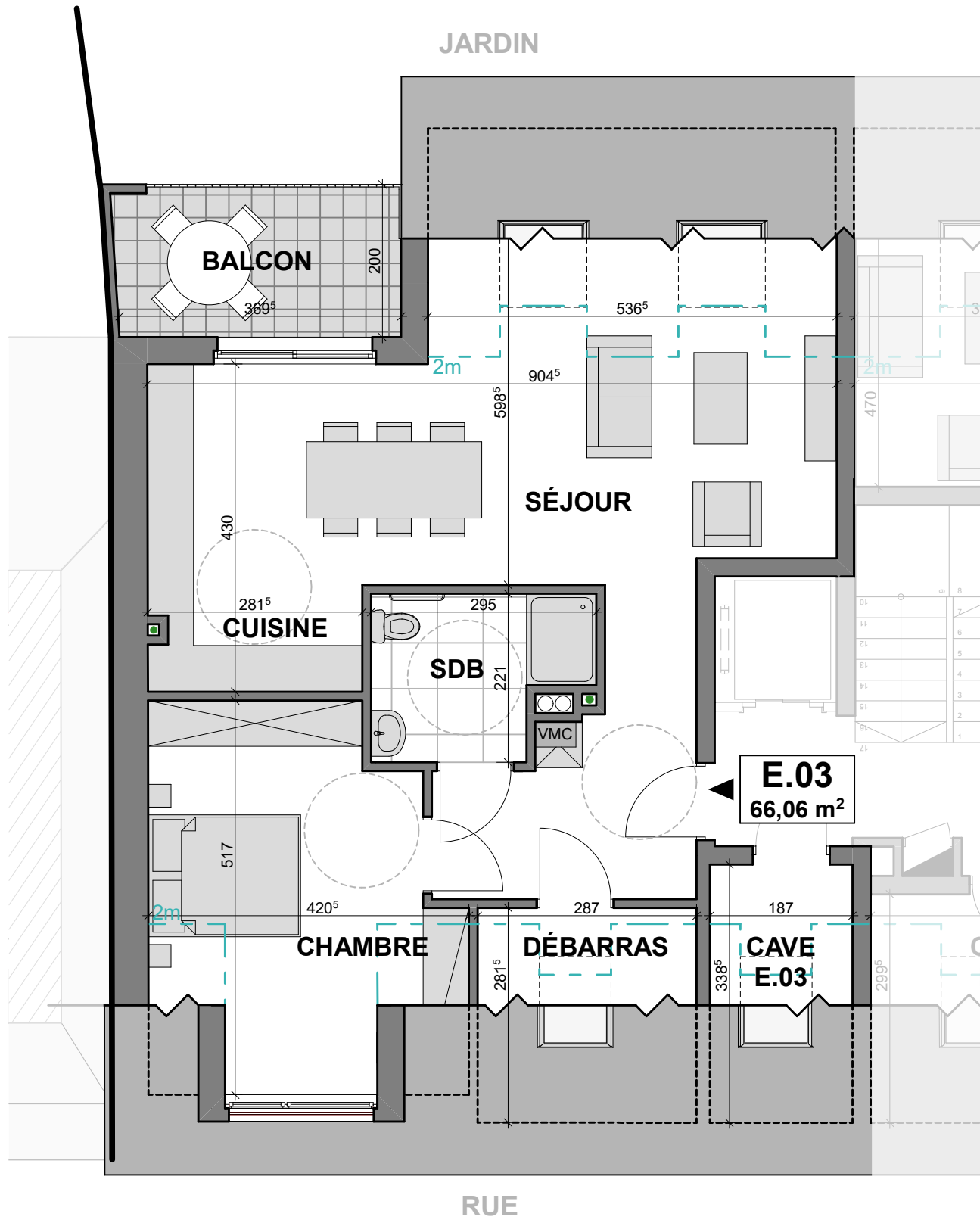


APPARTEMENT E.03

82 GRAND-RUE - MERTERT

COMBLES

JARDIN



COUPE LONGITUDINALE

1:200*



FACADE SUD

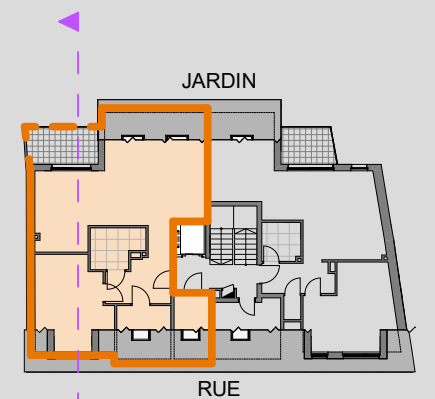
APP. E.03	± 66,06 m ²
Hall	9,38 m ²
Cuisine	14,49 m ²
Séjour	18,44 m ²
Salle de bain	5,61 m ²
Débarras	1,49 m ²
Chambre	14,62 m ²
Balcon	7,47 m ²
Cave	2,25 m ²

Les surfaces indiquées offrent une hauteur sous plafond supérieure à 2m.
± 90,50 m² au sol

Logement adapté
Personne à Mobilité Réduite



N



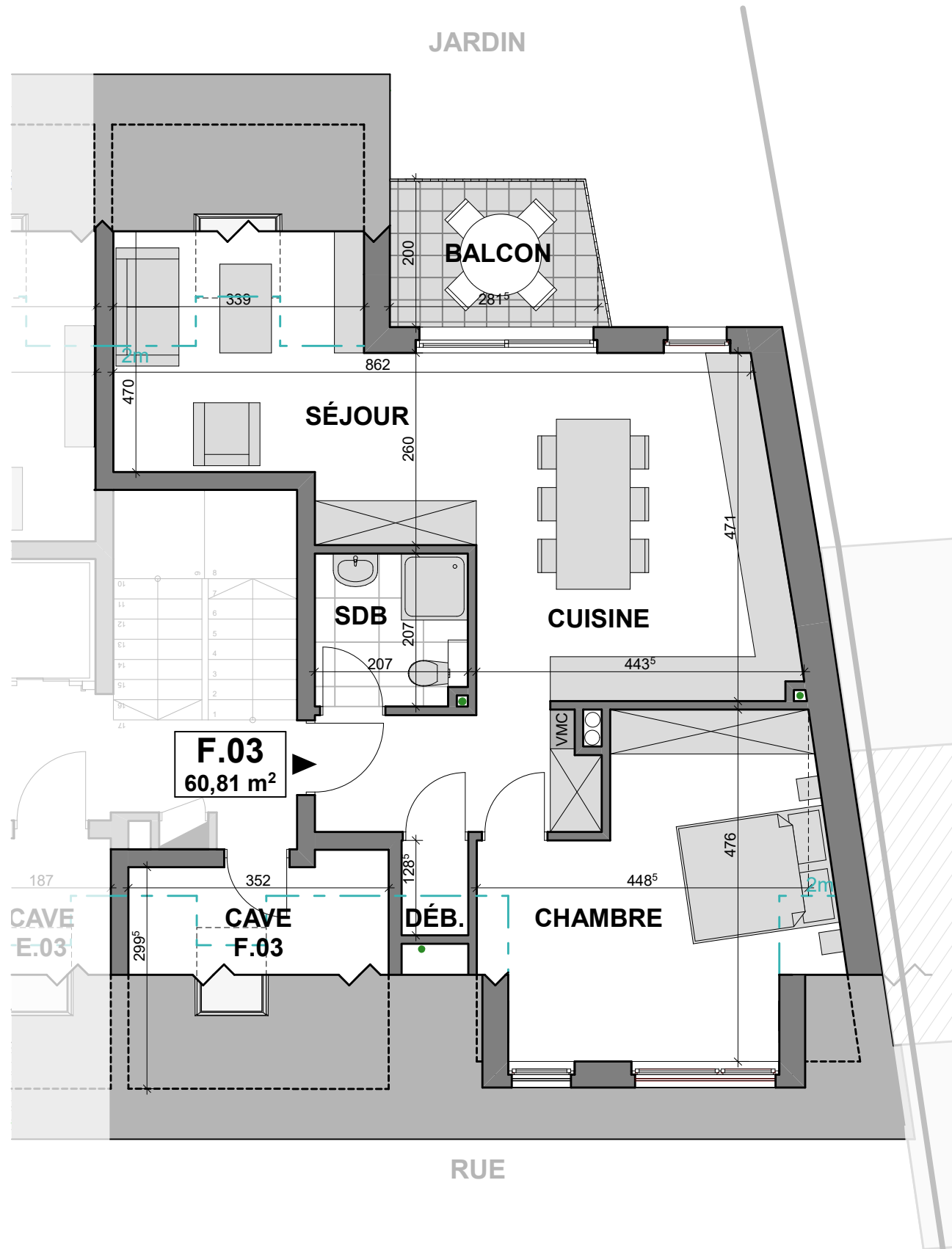
COMBLES

1:75*

APPARTEMENT F.03

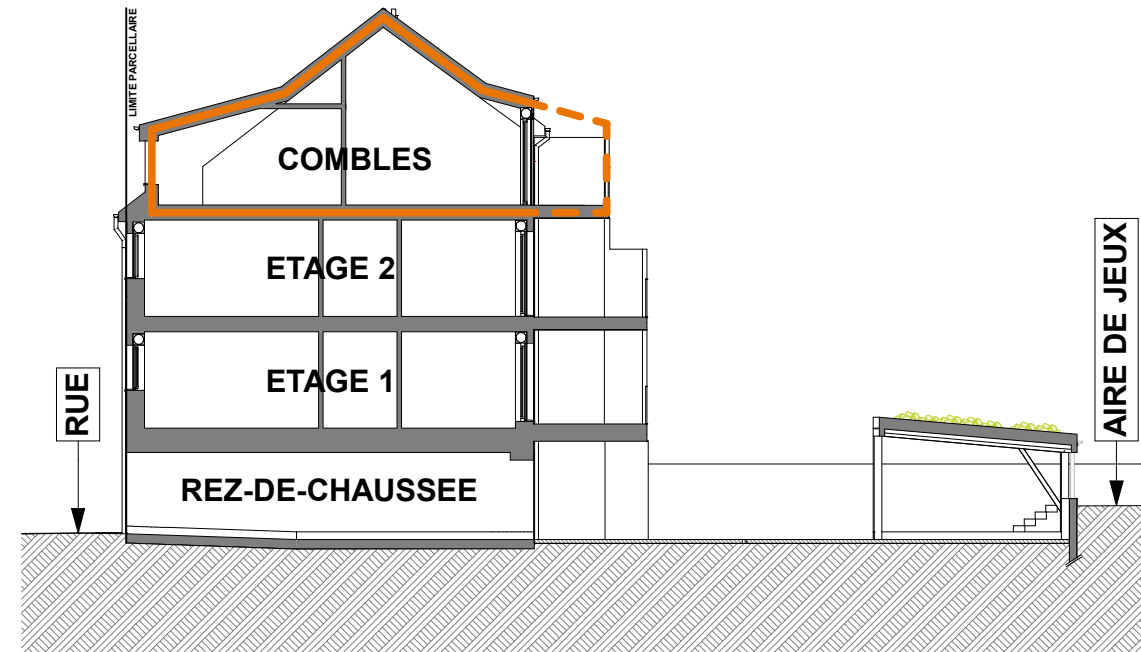
82 GRAND-RUE - MERTERT

COMBLES



COMBLES

1:75*



COUPE LONGITUDINALE

1:200*



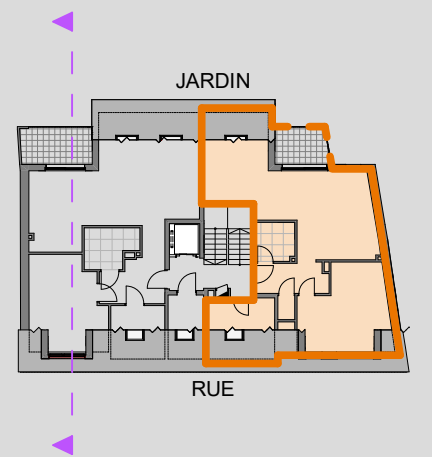
FACADE SUD

APP. F.03	± 60,81 m ²
Hall	6,15 m ²
Cuisine	19,19 m ²
Séjour	11,19 m ²
Salle de bain	4,38 m ²
Débarras	1,16 m ²
Chambre	16,66 m ²
Balcon	5,65 m ²
Cave	2,54 m ²

Les surfaces indiquées offrent une hauteur sous plafond supérieure à 2m.
± 73,14 m² au sol



N

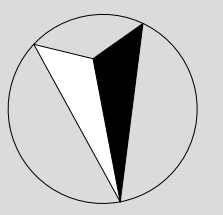
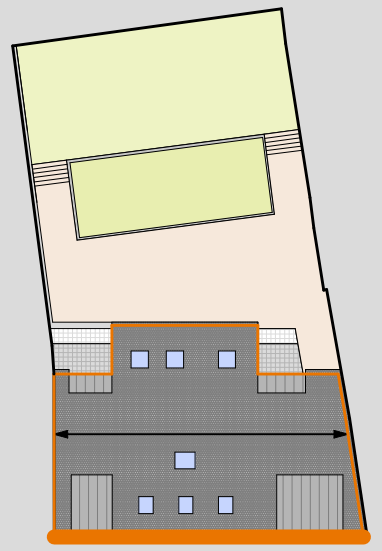


82 GRAND-RUE - MERTERT

FACADE
NORD

LIMITE PARCELLAIRE

LIMITE PARCELLAIRE



N

1:75*

LIMITE PARCELLAIRE

LIMITE PARCELLAIRE

H. fa.
13,81

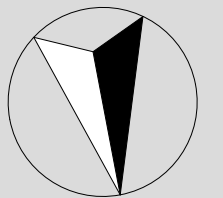
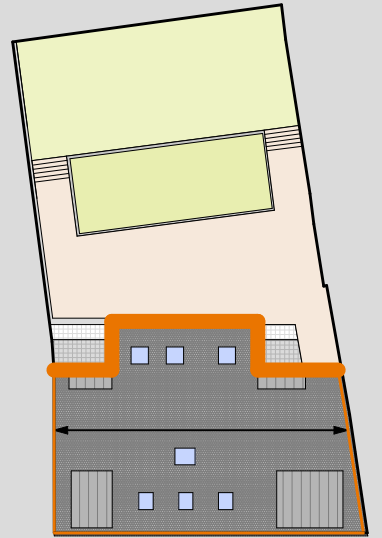
H. co.
8,55

8,46

5,56

2,65

niveau
référence
0,00



N

1:75

IMMEUBLE RESIDENTIEL

82 GRAND-RUE - MERTERT



PROMOTEUR

DELTACAP S.A.
41 rue du Kiem
L-8030 STRASSEN

ARCHITECTE

GROUPE L[®]
ARCHITECTURE, URBANISM AND MORE
304 A route de Thionville
L-5884 HOWALD